



VACUUM VENTURI

CV VACUUM VENTURI



- Anodized aluminum body
- All metal construction
- Maximum vacuum of 27" Hg
- Vacuum flow rates up to 8CFM
- Single stage technology
- HSK Models include part presence switch



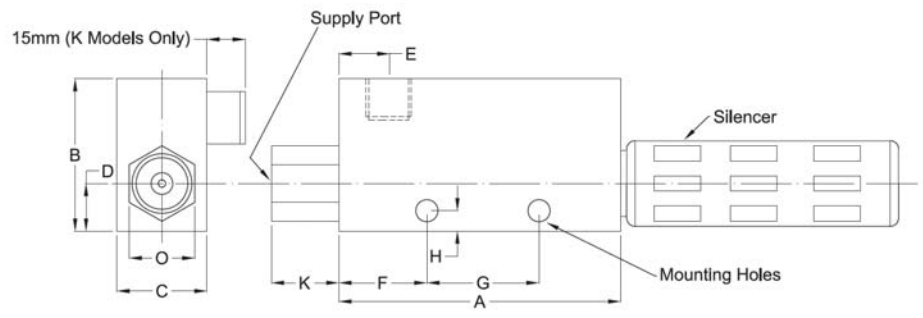
N		CV		15		H		SK	
Ports		Series		Venturi Nozzle Ø		Vacuum Level		Switch Option	
	BSP			05	0.5mm	H	-87kPa / 26.5" Hg		No Switch
N	NPT			10	1.0mm			SK	Adjustable Vacuum Switch adjustment range between -20kPa to -53kPa / 6-16" Hg
				15	1.5mm				
				20	2.0mm				
				25	2.5mm				
				30	3.0mm				

CV25 and CV30 models are not available with a vacuum switch option

SPECIFICATIONS

Model	Venturi Ø	Vacuum Flow l/min / CFM	Max Vacuum -Kpa / "Hg	Air Consumption l/min / CFM	Weight (g) HS / HSK Model
CV05H / SK	0.5mm	7 / 0.25	-87kPa / 26.5Hg	13 / 0.5	80 / 120
CV10H / SK	1.0mm	27 / 1.0		44 / 1.6	
CV15H / SK	1.5mm	63 / 2.2		100 / 3.5	140 / 190
CV20H / SK	2.0mm	110 / 3.9		180 / 6.3	350 / 460
CV25H	2.5mm	160 / 5.7		265 / 9.4	730 / -
CV30H	3.0mm	225 / 8.0		385 / 13.5	870 / -

DIMENSIONS (mm)



Model	A	B	C	D	E	F	G	H	ØI	Supply	Vacuum	Exhaust	
CV05H / SK	45	33	16	10	8	14	20	4.5	4.5	1/8	1/8	1/8	
CV10H / SK				11				5					
CV15H / SK	63	35	20	11	10	20	25	5		6	1/4	1/4	1/4
CV20H	85	40	30	15	13	28	32	7					
CV20HSK		50		15	13	28	32	7					
CV25H	100	60	40	20	16	20	50	5.5		6	3/8	1/2	3/4
CV30H	118	60	40	20	20	33		5.5	1/2		3/4		



FLOW PERFORMANCE

Model	Supply	Air Use l/min	Vacuum Flow (l/min) at Different Vacuum Levels (-kPa)									Max Vacuum
			0	10	20	30	40	50	60	70	80	
CV05H/SK	5bar	13	7	5.5	4.2	3	1.5	0.8	0.5	0.2	0.05	-90kPa
CV10H/SK		44	27	19	16	14.5	13	10.5	8	6.5	2.5	
CV15H/SK		100	63	55	44	37	32.5	25	18	14	9	
CV20H/SK		180	110	100	85	75	55	41	30	20	12	
CV25H		265	160	155	140	120	95	72	47	28	15	
CV30H		385	225	200	160	135	105	78	55	33	19	

Model	Supply	Air Use CFM	Vacuum Flow (SCFM) at Different Vacuum Levels ("Hg)									Max Vacuum
			0	10	20	30	40	50	60	70	80	
CV05H/SK	75psi	0.46	0.25	0.19	0.15	0.11	0.05	0.03	0.02	0.01	0.00	27"Hg
CV10H/SK		1.6	1.0	0.7	0.6	0.5	0.5	0.4	0.3	0.2	0.1	
CV15H/SK		3.5	2.2	1.9	1.6	1.3	1.1	0.9	0.6	0.5	0.3	
CV20H/SK		6.4	3.9	3.5	3.0	2.7	1.9	1.4	1.1	0.7	0.4	
CV25H		9.4	5.7	5.5	4.9	4.2	3.4	2.5	1.7	1.0	0.5	
CV30H		13.6	8.0	7.1	5.7	4.8	3.7	2.8	1.9	1.2	0.7	

TIME PERFORMANCE

Evacuation time (sec/l) to different vacuum levels (-SKPa)									
Model	Supply	10	20	30	40	50	60	70	80
CV05H/SK	75psi	0.6	1.4	2.7	4.3	6.0	8.2	9.4	11.8
CV10H/SK		0.2	0.5	0.8	1.2	1.7	2.3	2.9	4.0
CV15H/SK		0.08	0.19	0.3	0.48	0.69	0.9	1.4	1.9
CV20H/SK		0.04	0.1	0.16	0.23	0.34	0.5	0.7	0.9
CV25H		0.03	0.07	0.1	0.17	0.24	0.34	0.5	0.75
CV30H		0.03	0.06	0.09	0.14	0.2	0.27	0.4	0.63

Evacuation time (sec/ft³) to different vacuum levels ("Hg)									
Model	Supply	10	20	30	40	50	60	70	80
CV05H/SK	75psi	16.8	39.2	75.6	120.4	168	229.6	263.2	330.4
CV10H/SK		5.6	14	22.4	33.6	47.6	64.4	81.2	112
CV15H/SK		2.24	5.32	8.4	13.44	19.32	25.2	39.2	53.2
CV20H/SK		1.12	2.8	4.48	6.44	9.52	14	19.6	25.2
CV25H		0.84	1.96	2.8	4.76	6.72	9.52	14	21
CV30H		0.84	1.68	2.52	3.92	5.6	7.56	11.2	17.64

VABS VACUUM VENTURI



- Integral vacuum switch
- Box style vacuum venturi
- Lightweight and compact
- Inch port sizes 5/32", 1/4", 5/16" & 3/8"
- Metric port sizes 4, 6, 8 & 10mm
- Internal silencer



VABS 07 06

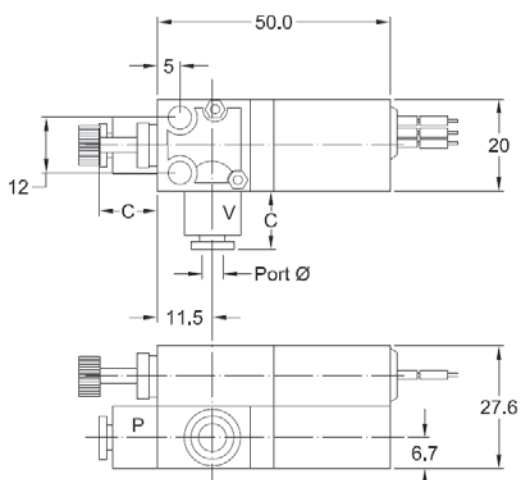
Series	Venturi Nozzle Ø		Supply & Vacuum Port Ø	
07	0.7mm	04	4mm (5/32")	
12	1.2mm	06	6mm	
15	1.5mm	14	1/4"	
		08	8mm (5/16")	
		10	10mm	
		38	3/8"	

Venturi Ø	Tube Connection Availability					
	04	06	14	08	10	38
0.7mm	●	●	●			
1.2mm	●	●	●			
1.5mm				●	●	●

SPECIFICATIONS

Model	Venturi Ø	Tube Ø	Vacuum Flow l/min / CFM	Max Vacuum -Kpa / "Hg	Air Consumption l/min / CFM	Supply Pressure bar / psi
VABS0704	0.7mm	4mm (5/32")	6 / 0.2	86.7 / 26.0	13 / 0.45	5 / 73
VABS0706		6mm	27 / 0.96		44 / 1.56	
VABS0714		1/4"				
VABS1204	1.2mm	4mm (5/32")	63 / 2.23	92.0 / 27.5	100 / 3.53	
VABS1206		6mm	90 / 3.2		130 / 4.6	
VABS1214		1/4"				
VABS1508	1.5mm	8mm (5/16")	110 / 3.89		180 / 6.36	
VABS1510		10mm				
VABS1538		3/8"				

DIMENSIONS (mm)



Model	Port Sizes Ø	Dimension C
VABS0704	4mm (5/32")	14.5
VABS0706	6mm	16
VABS0714	1/4"	
VABS1204	4mm (5/32")	14.5
VABS1206	6mm	16
VABS1214	1/4"	
VABS1508	8mm (5/16")	
VABS1510	10mm	
VABS1538	3/8"	

- Box style vacuum venturi
- Lightweight and compact
- Inch port sizes 5/32", 1/4", 5/16" & 3/8"
- Metric port sizes 4, 6, 8 & 10mm
- Internal silencer



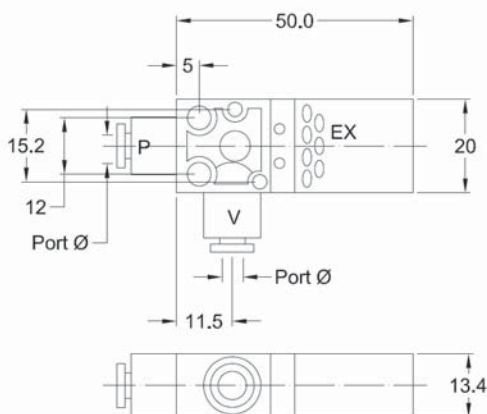
VAB 07		06	
Series	Venturi Nozzle Ø	Supply & Vacuum Port Ø	
07	0.7mm	04	4mm (5/32")
12	1.2mm	06	6mm
15	1.5mm	14	1/4"
		08	8mm (5/16")
		10	10mm
		38	3/8"

Venturi Ø	Tube Connection Availability					
	04	06	14	08	10	38
0.7mm	●	●	●			
1.2mm	●	●	●			
1.5mm				●	●	●

SPECIFICATIONS

Model	Venturi Ø	Tube Ø	Vacuum Flow l/min / CFM	Max Vacuum -Kpa / "Hg	Air Consumption l/min / CFM	Supply Pressure bar / psi
VAB0704	0.7mm	4mm (5/32")	7 / 0.2	86.7 / 26.0	13 / 0.45	5 / 73
VAB0706		6mm	13 / 0.96		44 / 1.56	
VAB0714		1/4"				
VAB1204	1.2mm	4mm (5/32")	63 / 2.23	92.0 / 27.5	100 / 3.53	
VAB1206		6mm	90 / 3.2		130 / 4.6	
VAB1214		1/4"				
VAB1508	1.5mm	8mm (5/16")	110 / 3.9		180 / 6.36	
VAB1510		10mm				
VAB1538		3/8"				

DIMENSIONS (mm)



Model	Port Sizes Ø	Dimension C
VAB0704	4mm (5/32")	14.5
VAB0706	6mm	16
VAB0714	1/4"	
VAB1204	4mm (5/32")	14.5
VAB1206	6mm	16
VAB1214	1/4"	
VAB1508	8mm (5/16")	
VAB1510	10mm	
VAB1538	3/8"	

VML VACUUM VENTURI



- Inline vacuum venturi
- Lightweight and compact
- Inch port sizes 5/32", 1/4", 5/16", 3/8" & 1/2"
- Metric port sizes 4, 6, 8, 10 & 12mm
- Internal silencer



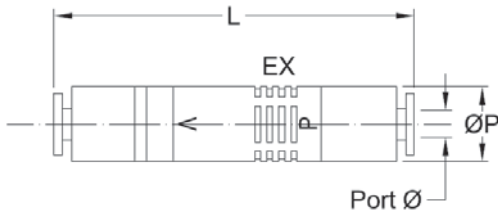
VML	10	06
Series	Venturi Nozzle Ø	Supply & Vacuum Port Ø
05	0.5mm	04 4mm (5/32")
10	1.0mm	06 6mm
15	1.5mm	14 1/4"
20	2.0mm	08 8mm (5/16")
		10 10mm
		38 3/8"
		12 12mm
		12N 1/2"

Venturi Ø	Tube Connection Availability							
	04	06	14	08	10	38	12	12N
05	●	●	●					
10		●	●	●				
15				●	●	●		
20					●	●	●	●

SPECIFICATIONS

Model	Venturi Ø	Port (P & V) Ø	Vacuum Flow l/min / CFM	Weight (g)
VML0504	0.5mm	4mm (5/32")	11.5 / 0.4	25
VML0506		6mm		
VML0514		1/4"		
VML1006	1.0mm	6mm	45 / 1.6	30
VML1014		1/4"		
VML1008		8mm (5/16")		
VML1508	1.5mm	3/8"	68 / 2.4	45
VML1538		10mm		
VML1510		10mm		
VML2010	2.0mm	12mm	90 / 3.2	53
VML2012		12mm		
VML2012N		1/2"		

DIMENSIONS (mm)



Model	Port Size Ø	L	ØP
VML0504	4mm (5/32")	60	14
VML0506	6mm	66	
VML0514	1/4"		
VML1006	6mm	76	16
VML1014	1/4"		
VML1008	8mm (5/16")		
VML1508	3/8"	79	19
VML1538	10mm		
VML1510	10mm		
VML2010	12mm	90	22
VML2012	12mm		
VML2012N	1/2"		

- Inline vacuum venturi with threaded vacuum port
- Lightweight and compact
- Inch supply port sizes 5/32", 1/4", 5/16", 3/8" & 1/2"
- Metric supply port sizes 4, 6, 8, 10 & 12mm
- Internal silencer



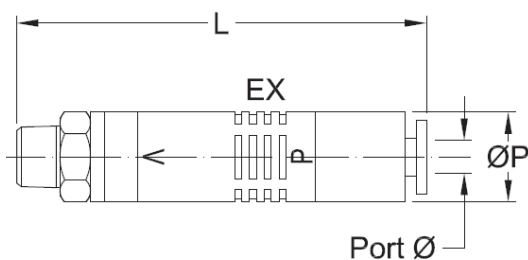
VMK	10	06	01
Series	Venturi Nozzle Ø	Supply Port (P)	Vacuum Port
05	0.5mm	4 4mm (5/32")	M5 M5 (10-32UNF)
10	1.0mm	6 6mm	01 R1/8
15	1.5mm	8 8mm (5/16")	02 R1/4
20	2.0mm	10 10mm	03 R3/8
		12 12mm	04 R1/2

Vacuum Port Tube Ø	Thread Size Vacuum Port				
	M5	R1/8	R1/4	R3/8	R1/2
4mm (5/32")	●				
6mm		●			
8mm (5/16")		●			
10mm			●		
12mm				●	●

SPECIFICATIONS

Model	Venturi Ø	Tube Ø	Thread (V)	Vacuum Flow l/min / CFM	Weight (g)
VMK054M5	0.5mm	4mm (5/32")	M5	11.5 / 0.4	20
VMK05601		6mm	R1/8		25
VMK10601	1.0mm	8mm (5/16")		R1/4	45 / 1.6
VMK10801					
VMK15802	1.5mm	10mm	R3/8	68 / 2.4	45
VMK15103					
VMK20103	2.0mm	12mm	R1/2	90 / 3.2	53
VMK20124					

DIMENSIONS (mm)



Model	Tube Ø	Thread Port	L	ØP
VMK054M5	4mm (5/32")	M5	56	14
VMK05601	6mm	R1/8	62	
VMK10601			73	16
VMK10801	75			
VMK15802	8mm (5/16")	R1/4	74	19
VMK151003				
VMK201003	10mm	R3/8	89	22
VMK201204				

VMT VACUUM VENTURI



- T style vacuum venturi
- Lightweight and compact
- Inch supply port sizes 5/32", 1/4", 5/16", 3/8" & 1/2"
- Metric supply port sizes 4, 6, 8, 10 & 12mm
- Perpendicular exhaust port suitable for clean rooms

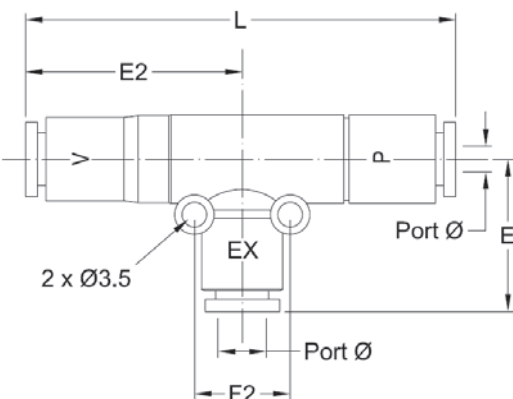


VMT	10	06
Series	Venturi Nozzle Ø	Supply & Vacuum Port
05	0.5mm	4mm (5/32")
10	1.0mm	6mm
15	1.5mm	8mm (5/16")
20	2.0mm	10mm
		12mm

SPECIFICATIONS

Model	Venturi Ø	Air Supply (P) & Vacuum Port (V) Ø	Exhaust Port (EX) Ø	Vacuum Flow l/min / CFM	Weight (g)
VMT0504	0.5mm	4mm (5/32")	6mm	11.5 / 0.4	40
VMT0506		6mm			
VMT05014		1/4"	1/4"		
VMT1006	1.0mm	6mm	6mm	45 / 1.6	45
VMT1014		1/4"	8mm (5/16")		
VMT1008		8mm (5/16")			
VMT1508	1.5mm	10mm	10mm	68 / 2.4	58
VMT1510					54
VMT2038	2.0mm	3/8"	3/8"	90 / 3.2	69
VMT2010		10mm	12mm		
VMT2012		12mm			1/2"
VMT2012N		1/2"	64		

DIMENSIONS (mm)



Model	Air Supply (P) & Vacuum Port (V) Ø	Exhaust Port (EX) Ø	L	E	E2	
VMT0504	4mm (5/32")	6mm	60	24	29	
VMT0506	6mm		66		32	
VMT05014	1/4"		1/4"			
VMT1006	6mm	6mm	76	27	40	
VMT1014	1/4"	8mm (5/16")	79		42	
VMT1008	8mm (5/16")			10mm	42	40
VMT1508	10mm	10mm	90			50
VMT1510	10mm					
VMT2038	3/8"			3/8"		
VMT2010	10mm			12mm		
VMT2012	12mm					
VMT2012N	1/2"	1/2"				

- Manifold vacuum venturi with external or integral exhaust port
- Suitable for clean room environments
- Threaded port for air supply manifold connection
- Lightweight and compact
- R1/8 & R1/4 Supply pressure ports
- Vacuum ports of 6, 8 & 10mm



VMB Series

VMD Series

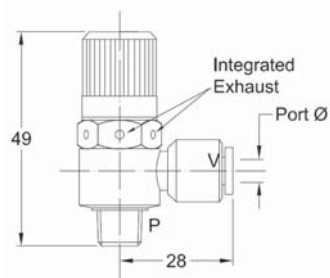
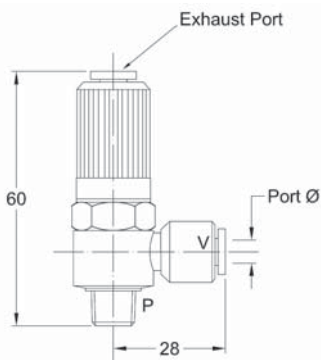
VMB		07		06		01	
Series Type		Venturi Nozzle Ø		Supply Port (P)		Vacuum Port	
VMB	External Exhaust	05	0.5mm	6	6mm	M5	M5 (10-32UNF)
VMD	Integral Exhaust	07	0.7mm	8	8mm (5/16")	01	R1/8
		10	1.0mm	10	10mm	02	R1/4
		15	1.5mm	12	12mm		

SPECIFICATIONS

Model	Venturi Ø	Port (V) Ø	Supply Port (P)	Vacuum Flow l/min / CFM
VMB05601 & VMD05601	0.5mm	6mm	R1/8	11.5 / 0.4
VMB07601 & VMD07601	0.7mm	8mm		23 / 0.8
VMB07801 & VMD07801		6mm		45 / 1.6
VMB10601 & VMD10601	1.0mm	8mm	R1/4	
VMB10801 & VMD10801		6mm		
VMB15802 & VMD15802	1.5mm	8mm	R1/4	67.5 / 2.4
VMB15102 & VMD15102		10mm		

Tube Ø	Air Supply Port	
	R1/8	R1/4
6mm	●	
8mm (5/16")	●	●
10mm		●

DIMENSIONS (mm)



Model	Port (V) Ø	Thread Port (P)	L	E
VMB05601	6mm	R1/8	58	26
VMB07601				
VMB07801	8mm			
VMB10601	6mm	R1/4	73	28
VMB10801	8mm			
VMB15802	10mm	R1/4	58	30
VMB15102				

Model	Port (V) Ø	Thread Port (P)	L	E
VMD05601	6mm	R1/8	49	26
VMD07601	8mm			27.5
VMD07801				26
VMD10601	6mm	R1/4	58	28
VMD10801	8mm			
VMD15802	10mm	R1/4	58	30
VMD15102				

VFVG30 VACUUM GENERATOR



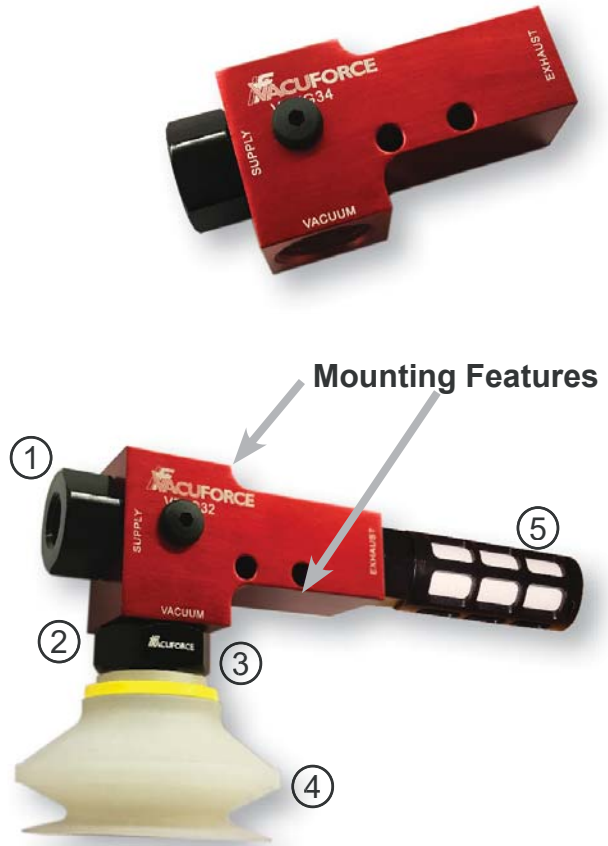
- Single stage venturi technology
- 2 Axis mounting features
- Extremely efficient
- Lightweight construction
- Ideal for point of use vacuum cup applications

VFVG		30	
Series	Vacuum Port		
30	G1/8		
32	G1/4		
34	G3/8		

Operation Principle

Compressed air is supplied to the venturi nozzle (1). Vacuum is generated at the vacuum port (2) which has a cup fitting (3) and vacuum suction cup (4) attached to it. The induced air is exhausted with the supply air through the silencer (5).

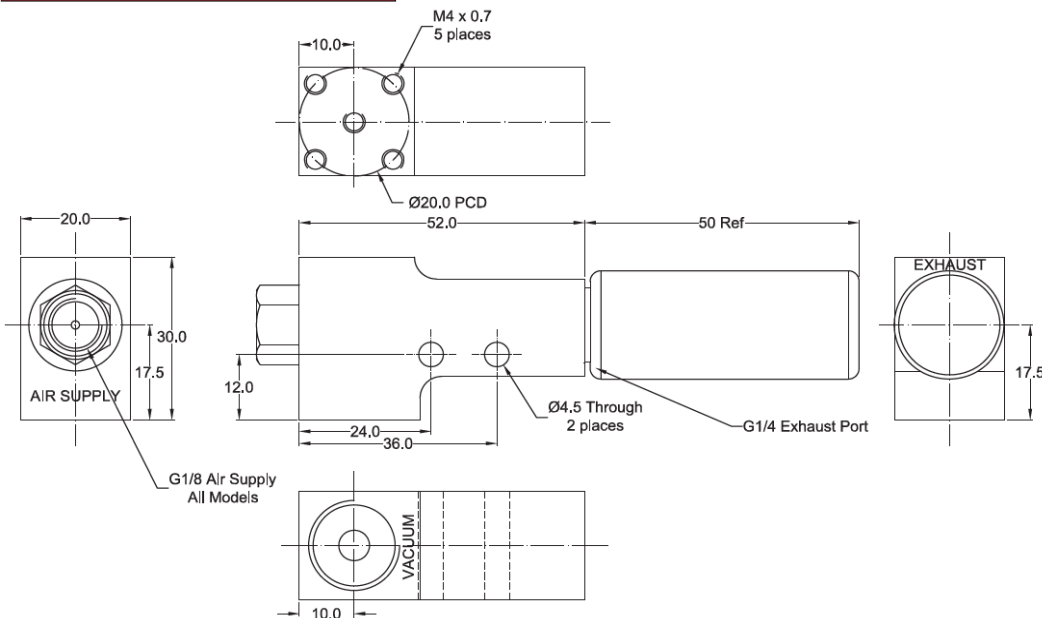
Cup fittings and vacuum cups should be ordered separately.



SPECIFICATIONS

Inlet Pressure	Vacuum Flow l/min / CFM	Max Vacuum -Kpa / "Hg	Air Consumption l/min / CFM	Weight (g)
4bar / 60psi	1.4CFM	70 / 21	1.2	75
5bar / 75psi		-80 / 24		

DIMENSIONS (mm)



- Single stage venturi technology
- 2 Axis mounting features
- Extremely efficient
- Lightweight construction
- Ideal for point of use vacuum cup applications

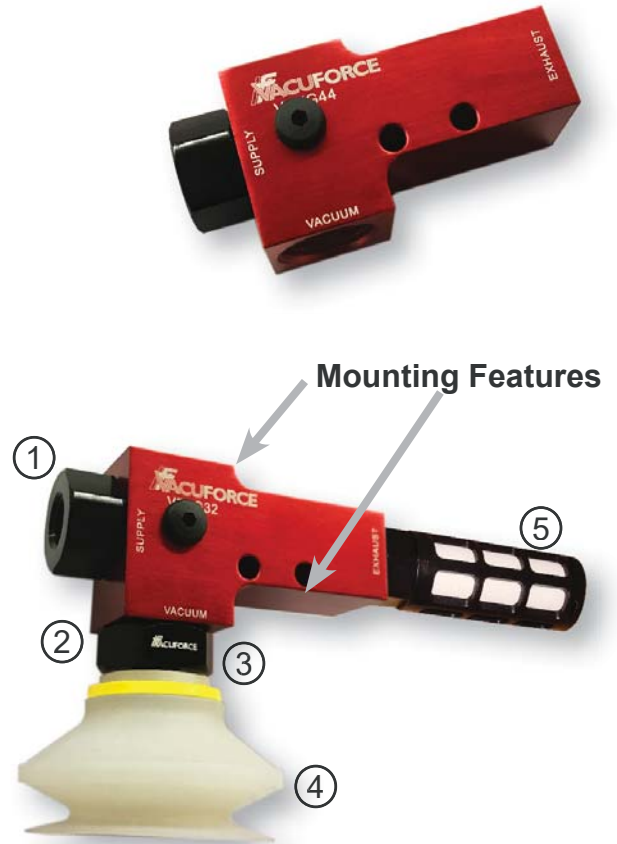
VFVG 40

Series	Vacuum Port
40	G1/8
42	G1/4
44	G3/8

Operation Principle

Compressed air is supplied to the venturi nozzle (1). Vacuum is generated at the vacuum port (2) which has a cup fitting (3) and vacuum suction cup (4) attached to it. The induced air is exhausted with the supply air through the silencer (5).

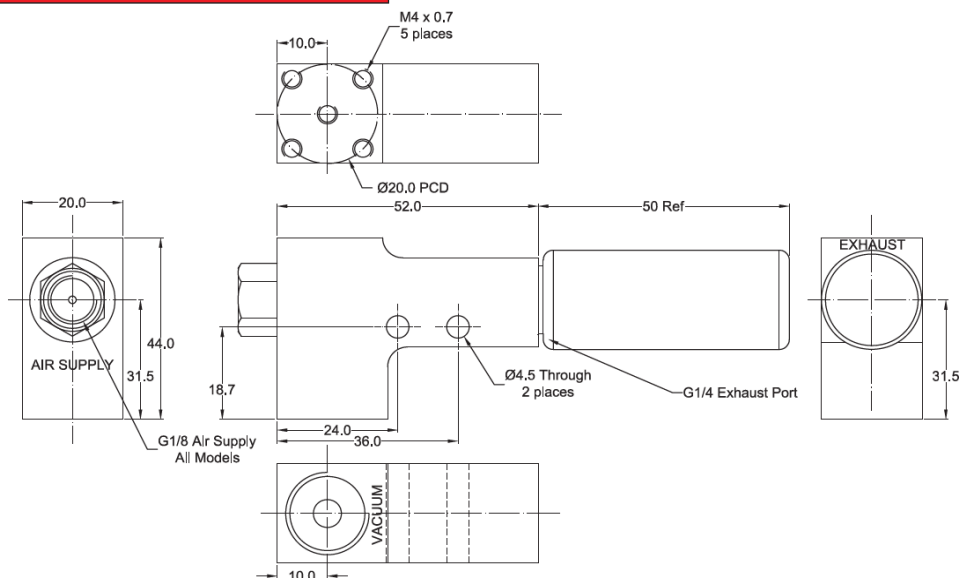
Cup fittings and vacuum cups should be ordered separately.



SPECIFICATIONS

Inlet Pressure	Vacuum Flow l/min / CFM	Max Vacuum -Kpa / "Hg	Air Consumption l/min / CFM	Weight (g)
4bar / 60psi	1.4CFM	70 / 21	1.2	75
5bar / 75psi		-80 / 24		

DIMENSIONS (mm)



ABM VACUUM GENERATOR



- Two stage vacuum generator
- Lightweight and compact
- Integral and external silencer options
- Threaded ports in BSPP and NPSF
- High efficient multi stage technology



ABM		10		NB					
Series	Venturi Nozzle Ø		Body Type						
	5	0.5mm	Code	Supply Port	Vacuum Port	Exhaust Type	Port Plate		
	10	1.0mm	A	M5 (10-32UNF)	G1/8	Internal Silencer	PBT Body		
	20	2.0mm	NA		1/8NPSF		Aluminum (ABM5 & 10)		
	30	3.0mm	B	G1/8	G3/8		PBT Body		
			BA		3/8NPSF		Aluminum		
			NB	1/8NPSF	3/8NPSF		PBT Body		
			NBA				Aluminum		
			C	G1/8	G3/8		External Silencer	PBT Body	
			NC	1/8NPSF	3/8NPSF			PBT Body	

SPECIFICATIONS

Model	Maximum Vacuum	Maximum Vacuum Flow l/min / CFM	Air Consumption @ 4bar / 60psi l/min / CFM
ABM5	-85kPa / 25.5"Hg	37 / 1.3	20 / 0.7
ABM10		75 / 2.7	42 / 1.5
ABM20		150 / 5.3	85 / 3.0
ABM30		220 / 7.8	125 / 4.4

TIME PERFORMANCE (sec/l)

Evacuation time (sec) to different vacuum levels (-kPa)

Model	Supply Pressure	10	20	30	40	50	60	70	80
ABM5	4.5bar / 66psi	0.11	0.42	0.95	1.66	2.5	3.65	5.25	7.89
ABM10		0.08	0.2	0.44	0.8	1.24	1.8	2.55	3.8
ABM20		0.04	0.12	0.23	0.41	0.65	0.93	1.33	2.03
ABM30		0.03	0.09	0.16	0.27	0.43	0.66	0.95	1.43

Evacuation time (sec) to different vacuum levels (-kPa)

Model	Supply Pressure	10	20	30	40	50	60	70	80
ABM5	6bar / 90psi	0.13	0.51	1.15	1.93	2.87	4.09	5.84	10.46
ABM10		0.029	0.23	0.53	0.92	1.37	1.95	2.77	4.62
ABM20		0.023	0.15	0.28	0.46	0.71	1.02	1.48	2.55
ABM30		0.015	0.077	0.138	0.308	0.49	0.69	1.02	1.75

TIME PERFORMANCE (sec/ft³)

Evacuation time (sec) to different vacuum levels ("Hg)									
Model	Supply Pressure	3	6	9	12	15	18	21	24
ABM5	4.5bar / 66psi	3.11	11.89	26.90	47.00	70.79	103.35	148.66	223.41
ABM10		2.27	5.66	12.46	22.65	35.11	50.97	72.21	107.60
ABM20		1.13	3.40	6.51	11.61	18.41	26.33	37.66	57.48
ABM30		0.85	2.55	4.53	7.65	12.18	18.69	26.90	40.49

Evacuation time (sec) to different vacuum levels ("Hg)									
Model	Supply Pressure	3	6	9	12	15	18	21	24
ABM5	6bar / 90psi	3.68	14.44	32.56	54.65	81.27	115.81	165.37	296.19
ABM10		0.82	6.51	15.01	26.05	38.79	55.22	78.44	130.82
ABM20		0.65	4.25	7.93	13.03	20.10	28.88	41.91	72.21
ABM30		0.42	2.18	3.91	8.72	13.87	19.54	28.88	49.55

FLOW PERFORMANCE @ 4.5bar/66psi

Model	Vacuum Flow Rates (nl/min) at Different Vacuum Levels (-kPa)									Maximum Vacuum
	0	10	20	30	40	50	60	70	80	
ABM5	35.0	20.5	12.0	10.5	8.5	6.5	4.5	2.5	0.8	-85kPa
ABM10	70.0	40.5	25.0	21.0	18.0	14.0	9.5	5.0	1.3	
ABM20	141.0	77.0	45.0	40.0	30.0	25.0	18.0	12.0	3.0	
ABM30	175.0	105.0	70.0	63.0	53.0	40.0	26.0	14.0	6.5	

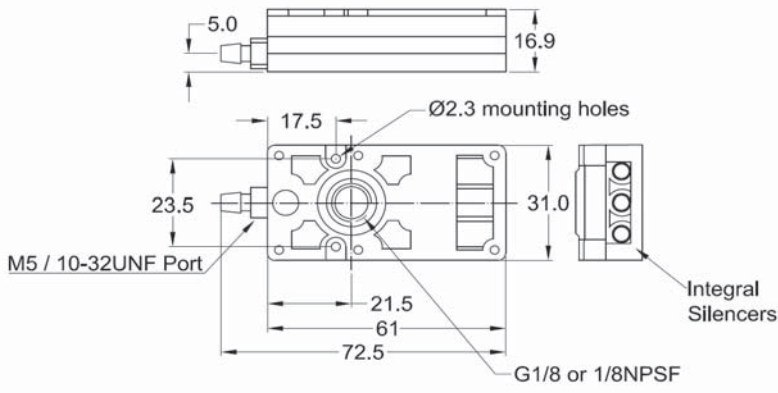
Model	Vacuum Flow Rates (CFM) at Different Vacuum Levels ("Hg)									Maximum Vacuum
	0	3	6	9	12	15	18	21	24	
ABM05	1.2	0.7	0.4	0.4	0.3	0.2	0.2	0.1	0.0	26"Hg
ABM10	2.5	1.4	0.9	0.7	0.6	0.5	0.3	0.2	0.0	
ABM20	5.0	2.7	1.6	1.4	1.1	0.9	0.6	0.4	0.1	
ABM30	6.2	3.7	2.5	2.2	1.9	1.4	0.9	0.5	0.2	

FLOW PERFORMANCE @ 6bar/90psi

Model	Vacuum Flow Rates (nl/min) at Different Vacuum Levels (-kPa)									Maximum Vacuum
	0	10	20	30	40	50	60	70	80	
ABM05	37.0	25.0	15.5	12.0	8.0	6.0	4.0	2.7	0.6	-85kPa
ABM10	75.0	55.0	27.0	20.0	18.0	12.0	9.0	5.0	2.0	
ABM20	150.0	100.0	55.0	38.0	30.0	24.0	16.0	11.0	3.2	
ABM30	220.0	150.0	81.0	65.0	50.0	38.0	27.0	18.0	5.0	

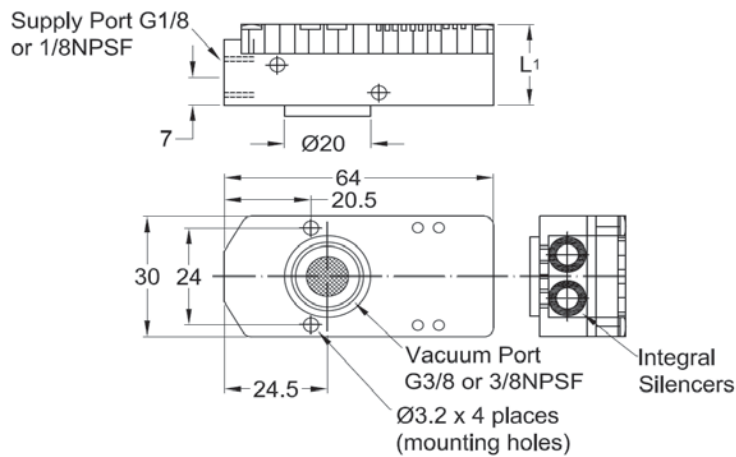
Model	Vacuum Flow Rates (CFM) at Different Vacuum Levels ("Hg)									Maximum Vacuum
	0	3	6	9	12	15	18	21	24	
ABM05	1.3	0.9	0.5	0.4	0.3	0.2	0.1	0.1	0.0	26"Hg
ABM10	2.7	1.9	1.0	0.7	0.6	0.4	0.3	0.2	0.1	
ABM20	5.3	3.5	1.9	1.3	1.1	0.8	0.6	0.4	0.1	
ABM30	7.8	5.3	2.9	2.3	1.8	1.3	1.0	0.6	0.2	

DIMENSIONS (mm)



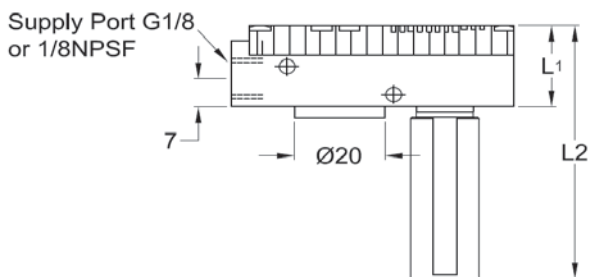
A & NA Body Type

Model	A	NA
ABM5	●	●
ABM10	●	●



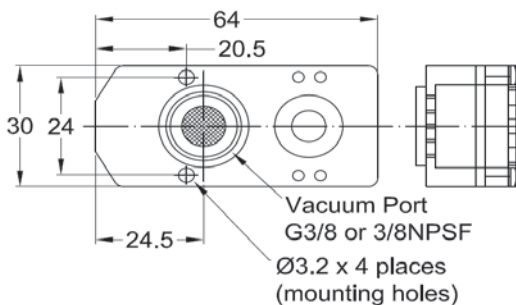
B, NB & NBA Body Type

Model	L1	B	NB	NBA
ABM5	20.5	●	●	●
ABM10		●	●	●
ABM20	27.5	●	●	●
ABM30	35.0	●	●	●



C & NC Body Type

Model	L1	L2	C	NC
ABM5	20.5	87	●	●
ABM10			●	●
ABM20	27.5	94	●	●
ABM30	35.0	102	●	●





Single Module
No Sensor



Single Module
With Sensor



Multiple Module
With Sensors

- Multi-function vacuum generator technology
- Two stage vacuum generator
- Lightweight and compact
- Integrated vacuum inlet filter
- Integrated silencer
- Integrated solenoid valves
- High efficient multi stage technology

Normally Closed vs Normally Open

Normally CLOSED means that the vacuum is OFF until power is applied to the vacuum on/off valve. Normally OPEN means that vacuum is always on until the control valve is powered.

Normally OPEN is often used in fail-safe environments so that the part remains attached to the vacuum cup(s) if there is a system power failure.

The ASM series of multi function vacuum generators offer the user a true solution in vacuum pick and place technology. Having integral control valves for both vacuum on/off and compressed air release, the ASM series are ideal for high speed packaging lines, steel stamping, pharmaceutical and any other application where “turn key” vacuum generation is required.

These individual modules are able to be stacked together to share both a common air supply and also exhaust port. This common exhaust port is particularly useful for clean room environments such as semi conductor assembly and other sensitive manufacturing environments.

ASM		05		Z		4		NC		N1	
Series	Venturi Nozzle Ø	Type		Stack Qty		Control Circuit		Sensor			
	05	Single Module		2		NC	Normally Closed	N1	2NPN + analogue		
	10	Z	Common Supply	3		NO	Normally Open	N2	2NPN		
	15	M	Common Supply & Exhaust	4				N3	2PNP + analogue		
	20			5				N4	2PNP		
				6							
				7							
				8							

SPECIFICATIONS

Model	Max Vacuum	Vacuum Flow l/min / CFM	Supply Pressure	Air Consumption l/min / CFM	Max Noise Level	Weight
ASM05	-85kPa 26"Hg	48 / 1.7	4-6bar 60-90psi	32-42 / 1.1-1.5	65dB(A)	250g / 8.8oz
ASM10		85 / 3.0		40-75 / 1.4-2.7		
ASM15		115 / 4.1		70-90 / 2.5-3.2		
ASM20		132 / 4.7		96-122 / 3.4-4.3		

FLOW PERFORMANCE

Model	Vacuum Flow Rates (nl/min) at Different Vacuum Levels (-kPa)									Maximum Vacuum
	0	10	20	30	40	50	60	70	80	
ASM05	41	20	12	10	8.5	7	4.5	2.6	0.5	-85kPa
ASM10	75	48	25	19	12	15	7	2.5	0.8	
ASM15	102	65	41	28	22	18	12	5	1.5	
ASM20	120	74	45	35	27	22	16	9	2.5	

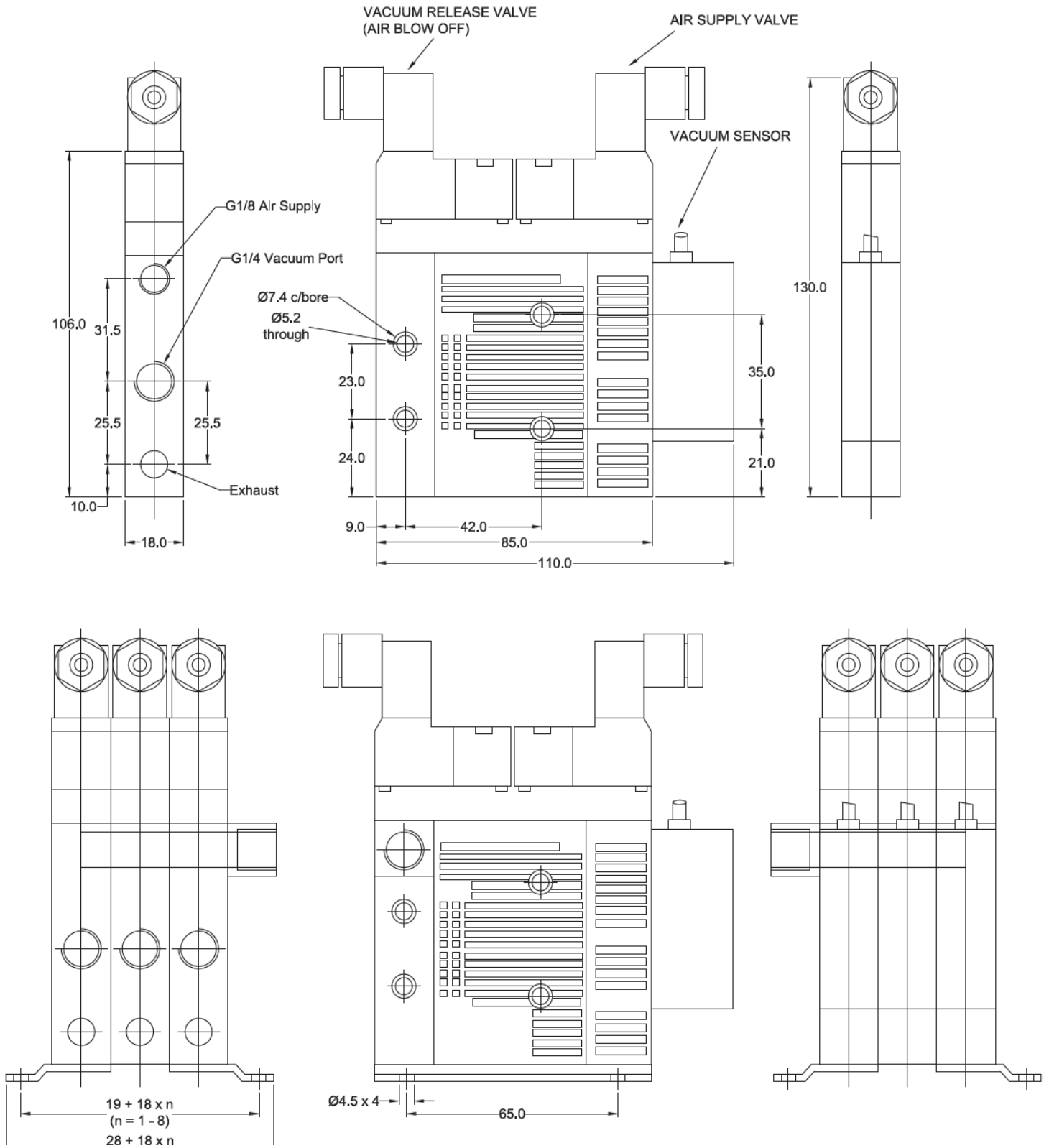
Model	Vacuum Flow Rates (CFM) at Different Vacuum Levels ("Hg)									Maximum Vacuum
	0	3	6	9	12	15	18	21	24	
ASM05	1.5	0.7	0.42	0.35	0.3	0.25	0.16	0.1	0.02	26"Hg
ASM10	2.7	1.7	0.9	0.7	0.5	0.4	0.3	0.1	0.03	
ASM15	3.6	2.3	1.5	0.1	0.8	0.6	0.4	0.2	0.05	
ASM20	4.2	2.6	1.6	1.2	1.0	0.8	0.6	0.3	0.09	

TIME PERFORMANCE

Model	Time to Evacuate a Volume (s/l) to Specific Vacuum Levels (-kPa)								Maximum Vacuum
	10	20	30	40	50	60	70	80	
ASM05	0.12	0.36	0.9	1.4	2.2	3.4	4.2	7	-85kPa
ASM10	0.1	0.31	0.56	0.9	1.5	2.3	3.2	4.7	
ASM15	0.07	0.25	0.43	0.76	1.2	1.9	2.6	4	
ASM20	0.05	0.14	0.32	0.68	0.98	1.6	2.1	2.8	

Model	Time to Evacuate a Volume (s/ft ³) to Specific Vacuum Levels ("Hg)								Maximum Vacuum
	3	6	9	12	15	18	21	24	
ASM05	3.36	10	25	39	61	95	117	196	26"Hg
ASM10	2.8	9	16	25	42	64	90	131	
ASM15	2	7	12	21	33	53	73	112	
ASM20	1.4	4	9	19	27	45	59	78	

DIMENSIONS (mm)



AM VACUUM GENERATOR



- Three stage vacuum generator
- Lightweight construction
- Threaded ports in BSPP and NPSF
- High efficient multi stage technology
- Ideal for centralized vacuum systems
- Very quiet operation, as low as 45dB(A)w
- Can be used with Vacuforce ESK energy savings system
- Available with aluminum or PPS (polypropylene sulphide) Port Plate



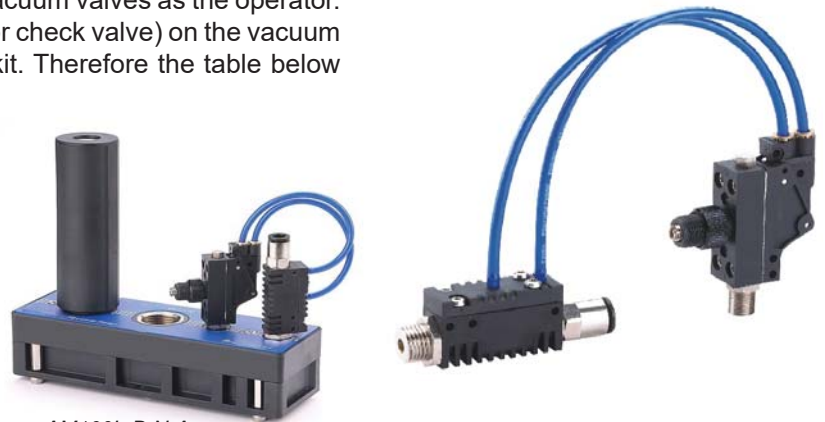
AM25L	B	N	A						
Model	Port Plate Designation		Seal Material	Check Valve					
AM25L	Code	Air Supply	Vacuum Port	Exhaust Port	Port Plate Material	N	NBR	A	YES
AM50L	AD	G1/4	G3/4	G3/4	Aluminum	E	EPDM		NO
AM75L	B	1/8NPSF	3/4NPT	3/4NPT	PPS	V	Fluorocarbon		
AM100L	D	1/8NPSF	G3/4	G3/4	PPS				
AM150L	E	1/4NPT	3/4NPT	3/4NPT	Aluminum				

Energy Saving Kits

This assembly connects directly to the AM and AL venturi models and offers an ON/OFF function for the vacuum generator depending on the vacuum level in the attached system. The switch has a set point range of -16 to -90kPa (5-27”Hg) and is ideal for centralized vacuum systems or systems using vacuum valves as the operator. Vacuum generator models with a non return valve (NRV or check valve) on the vacuum inlet should be ordered for use with the energy saving kit. Therefore the table below shows the designated suffix (A) for this option.

Check Valve Model	ESK Part Ref
AM25L-**-A	ESK25
AM50L-**-A	
AM75L-**-A	
AM100L-**-A	ESK100
AM150L-**-A	ESK150

e.g AM100L-B-N-A



AM100L-B-N-A
assembled with ESK25

SEAL KITS	Model	Kit NBR	Kit Viton	Kit EPDM	Spare Non Return Valves		
					NBR	Viton	EPDM
	AM25	01.0025.402	01.0025.602	01.0025.802	AMNRVNBR	AMNRVVT	AMNRVEPDM
	AM50						
	AM75	01.0075.404	01.0075.604	01.0075.804			
	AM100						
AM150	01.0125.404	01.0125.604	01.0125.804				



SPECIFICATIONS

Model	Maximum Vacuum	Maximum Vacuum Flow l/min / CFM	Air Consumption @ 6bar / 87psi l/min / CFM	Weight (g)
AM25L	-92kPa / 27.6”Hg	420 / 15	185 / 6.5	675
AM50L		700 / 25	370 / 13	
AM75L		950 / 34	610 / 21	837
AM100L		1010 / 36	720 / 25	
AM150L		1400 / 49	810 / 28	1075

FLOW PERFORMANCE

Model	Supply Pressure bar	Air Use l/min	Vacuum Flow (l/min) at Different Vacuum Levels (-kPa)										Max Vacuum
			0	10	20	30	40	50	60	70	80	90	
AM25L	3.4	116	359	181	116	79	42	31	23	16	8	1.1	-92kPa
	6	185	419	241	125	99	82	65	38	12	3	-	-89kPa
AM50L	3.4	230	600	320	249	136	76	59	46	30	13	1.4	-92kPa
	6	370	699	509	289	195	161	116	70	22	8	-	-89kPa
AM75L	3.4	365	761	444	340	175	110	85	70	43	20	1.7	-92kPa
	6	610	951	710	379	286	229	170	100	32	11	-	-89kPa
AM100L	3.4	445	849	549	430	280	144	116	85	60	28	2.3	-92kPa
	6	720	1010	801	461	385	311	215	125	42	16	-	-89kPa
AM150L	3.4	655	1200	9830	549	359	215	170	130	90	36	5.1	-92kPa
	6	810	1500	1109	631	560	385	314	210	65	26	-	-89kPa

Model	Supply Pressure psi	Air Use CFM	Vacuum Flow (CFM) at Different Vacuum Levels (“Hg)										Max Vacuum
			0	3	6	9	12	15	18	21	24	27	
AM25L	50	4.1	12.7	6.4	4.1	2.8	1.5	1.1	0.80	0.55	0.27	0.04	27.6”Hg
	87	6.5	14.8	8.5	4.4	3.5	2.9	2.3	1.34	0.44	0.12	-	26.7”Hg
AM50L	50	8.1	21.2	11.3	8.8	4.8	2.7	2.1	1.63	1.06	0.46	0.05	27.6”Hg
	87	13.0	24.7	18.0	10.2	6.9	5.7	4.1	2.47	0.78	0.28	-	26.7”Hg
AM75L	50	12.9	26.9	15.7	12.0	6.2	3.9	3.0	2.47	1.52	0.71	0.06	27.6”Hg
	87	21.5	33.6	25.1	13.4	10.1	8.1	6.0	3.53	1.13	0.39	-	26.7”Hg
AM100L	50	15.7	30.0	19.4	15.2	9.9	5.1	4.1	3.00	2.12	0.99	0.08	27.6”Hg
	87	25.4	35.7	28.3	16.3	13.6	11.0	7.6	4.42	1.48	0.55	-	26.7”Hg
AM150L	50	23.1	42.4	347.4	19.4	12.7	7.6	6.0	4.59	3.18	1.27	0.18	27.6”Hg
	87	28.6	53.0	39.2	22.3	19.8	13.6	11.1	7.42	2.30	0.92	-	26.7”Hg



TIME PERFORMANCE

Model	Supply Pressure bar(g)	Air Use l/min	Time to Evacuate a Volume (s/l) to Specific Vacuum Levels (-kPa)									Max Vacuum -kPa
			10	20	30	40	50	60	70	80	90	
AM25L	3.4	116	0.022	0.06	0.11	0.21	0.4	0.65	0.95	1.6	4	-92
	6	185	0.018	0.05	0.08	0.18	0.25	0.4	0.62	1.55	-	-89
AM50L	3.4	230	0.014	0.031	0.06	0.1	0.2	0.34	0.5	0.8	2.5	-92
	6	370	0.01	0.022	0.048	0.08	0.11	0.2	0.35	0.78	-	-89
AM75L	3.4	365	0.012	0.029	0.058	0.095	0.18	0.31	0.46	0.89	1.5	-92
	6	610	0.009	0.019	0.045	0.075	0.13	0.18	0.31	0.7	-	-89
AM100L	3.4	445	0.01	0.025	0.043	0.075	0.11	0.19	0.27	0.45	1.2	-92
	6	720	0.007	0.018	0.038	0.055	0.8	0.12	0.19	0.47	-	-89
AM150L	3.4	655	0.005	0.013	0.027	0.045	0.07	0.105	0.23	0.46	0.9	-92kPa
	6	810	0.003	0.009	0.014	0.03	0.06	0.095	0.2	0.8	-	-89kPa

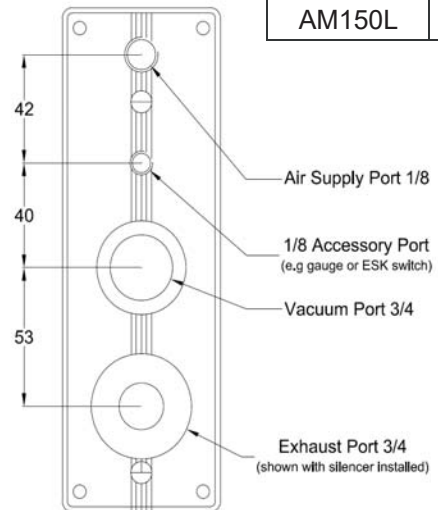
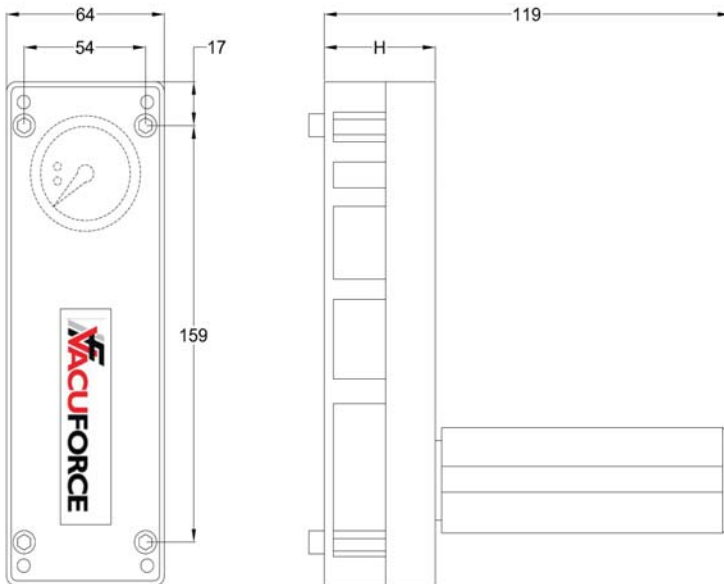
Model	Supply Pressure psi	Air Use CFM	Time to Evacuate a Volume (s/ft³) to Specific Vacuum Levels ("Hg)									Max Vacuum "Hg
			3	6	9	12	15	18	21	24	27	
AM25L	50psi	4.1	0.616	1.68	3.08	5.88	11.2	18.2	26.6	44.8	112	27.6
	87psi	6.5	0.504	1.4	2.24	5.04	7	11.2	17.36	43.4	-	26.7
AM50L	50psi	8.1	0.392	0.868	1.68	2.8	5.6	9.52	14	22.4	70	27.6
	87psi	13.0	0.28	0.616	1.344	2.24	3.08	5.6	9.8	21.84	-	26.7
AM75L	50psi	12.9	0.336	0.812	1.624	2.66	5.04	8.68	12.88	24.92	42	27.6
	87psi	21.5	0.252	0.532	1.26	2.1	3.64	5.04	8.68	19.6	-	26.7
AM100L	50psi	15.7	0.28	0.7	1.204	2.1	3.08	5.32	7.56	12.6	33.6	27.6
	87psi	25.4	0.196	0.504	1.064	1.54	22.4	3.36	5.32	13.16	-	26.7
AM150L	50psi	23.1	0.14	0.364	0.756	1.26	1.96	2.94	6.44	12.88	25.2	27.6
	87psi	28.6	0.084	0.252	0.392	0.84	1.68	2.66	5.6	22.4	-	26.7



DIMENSIONS (mm)

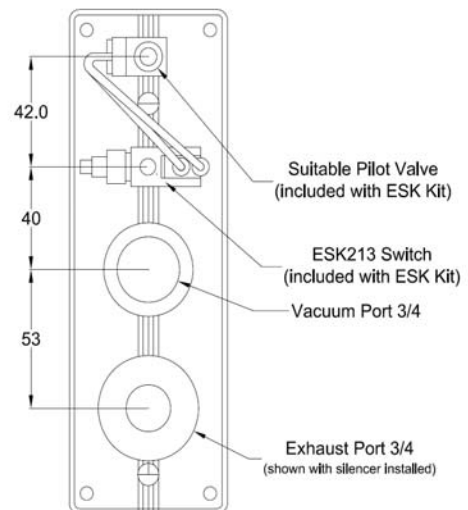
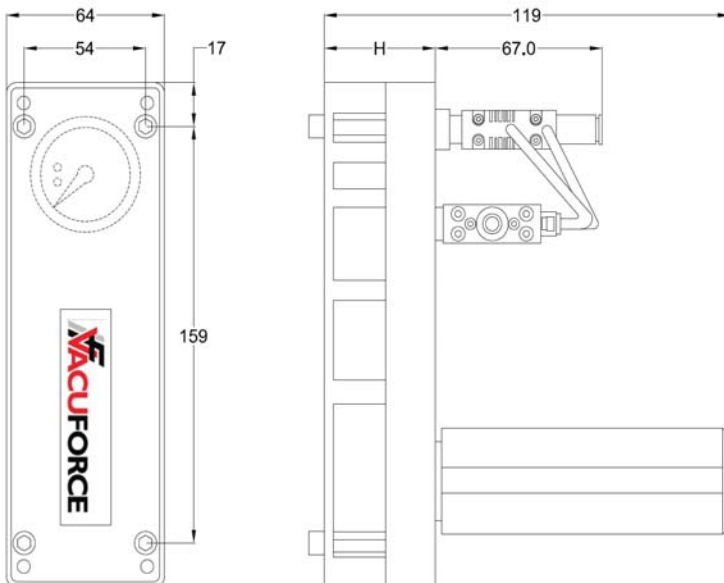
Standard Model

Model	H
AM25L	45
AM50L	
AM75L	65
AM100L	
AM150L	85



DIMENSIONS (mm)

ESK Model



VFAV MATERIAL CONVEYORS



- Aluminum or Stainless Steel Option
- Hard anodized Finish – Resistant to abrasion
- No Moving Parts
- No Heat Generation
- Maintenance Free



VFAV	3/8	N
Series	Vacuum Port	Thread Types
	1/4	BSP (G)
	3/8	N
	1/2	NPT
	3/4	

The VFAV venturi is an adjustable vacuum venturi offering a straight through flow design. This design feature enables these units to be used in dusty or dirty vacuum applications such as brick, concrete, wood and porous box handling.

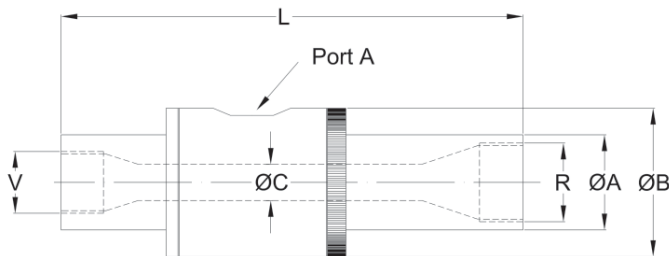
The VFAV venturi is adjustable independent of the compressed air inlet pressure by increasing and decreasing the venturi aperture. This is achieved by rotating the exhaust assembly on the right as shown in the product image above and setting this position with the lock ring.

SPECIFICATIONS

Model	Supply Pressure bar / psi	Air Consumption l/min/CFM @ Different Vacuum Levels -kPa / "Hg				
		17 / 5	34 / 10	50 / 15	68 / 20	84 / 25
VFAV250	5.5 / 80	112/4	169/6	233/8	276/10	342/12
VFAV375		176/6	327/11	485/17	595/21	825/29
VFAV500		340/12	625/22	795/28	940/33	1280/45
VFAV750		650/23	875/31	1250/44	1790/63	2550/90

Model	Supply Pressure bar / psi	Vacuum Flow l/min/CFM @ Different Vacuum Levels -kPa/"Hg				
		17 / 5	34 / 10	50 / 15	68 / 20	84 / 25
VFAV250	5.5 / 80	112/10	169/8.5	233/7	276/6	342/4.5
VFAV375		176/30	327/26	485/22	595/18	825/14
VFAV500		340/60	625/47	795/40	940/35	1280/23
VFAV750		650/120	875/87	1250/70	1790/51	2550/40

DIMENSIONS (mm)



Model	V Thread	R Thread	L	ØA	ØB	ØC	Port A
VFAV250	1/4	1/4	94-105	19	32	6.5	1/8
VFAV375	3/8	1/2	155-165	25	45	10	3/8
VFAV500	1/2	3/4	155-160	32	51	10	3/8
VFAV750	3/4	1	175-189	38	58	13	1/2

Features:

- Aluminum or Stainless Steel Option
- Hard anodized finish – resistant to abrasion
- No moving parts or heat generation
- Maintenance free



Suitable for conveying:

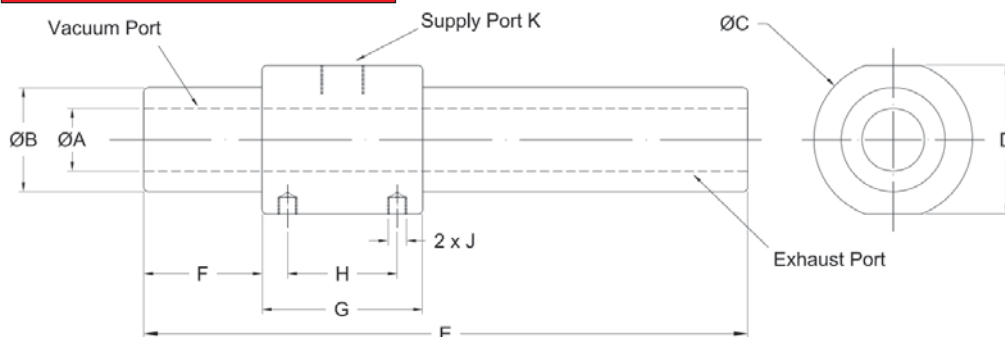
- Powder material, granular material
- Machining swarf, chips, fumes
- Wood chips & small parts

Series	Conveyor Passage Ø	Thread Type
9	9mm (3/8")	BSPP (G)
13	13mm (1/2")	N
19	19mm (3/4")	NPT
25	25mm (1")	
38	38mm (1.5")	

SPECIFICATIONS

Model	Air Velocity m/s / ft/sec	Vacuum Flow l/min/SCFM	Max Vacuum -kPa/"Hg	Air Consumption l/min / CFM	
				2.8bar/41psi	5.5bar/80psi
VFMC9	100/325	425/15	16/5	95/3.4	170/6
VFMC13	110/361	870/31	35/10	395/14	680/24
VFMC19	100/325	1825/65	28/8.4	790/28	1365/48
VFMC25	68/223	4400/88	4.42.4	405/14	695/24
VFMC38	82/270	5610/198	9/2.7	790/28	1365/48

DIMENSIONS (mm)



Model	ØA	ØB	ØC	D	E	F	G	H	J	K
VFMC9	9.5	19	32	30	89	19	25	18	M4	1/8
VFMC13	12.5	24	38	34	140	25.5	32	23		1/4
VFMC19	19	32	50	45	190	38	50	35		3/8
VFMC25	25	38	59	55	198	40	56	40		
VFMC38	38	50	69	65	205	40	60	42		

